



Learn PLUS US

Level 4

Certificate in Housing



Chartered
Institute of
Housing
Approved centre

LEARN | ACHIEVE | EXCEL

LEARNPLUSUS.CO.UK

Who We Are

LEARN, ACHIEVE, EXCEL WITH LEARN PLUS US

At Learn Plus Us, we empower individuals, employers, and communities to learn, achieve, and excel. Guided by the core values of empowerment, integrity, and empathy from the Angus Knight Group, we are dedicated to supporting personal and professional development.

Our passion for the Housing & Property sector drives us to provide high-quality training and career guidance, helping individuals and businesses thrive. We take pride in being a trusted partner for Housing Associations, Councils, and Property Management organisations. Our team works to create a supportive and inspiring environment, enabling learners to gain confidence, develop life skills, and succeed. Additionally, we provide training across three other key sectors: Early Years and Residential Childcare, and Business Services.

“Staff support learners and apprentices well, including those who need extra help to achieve. Learners and apprentices have frequent opportunities to discuss with their tutors any concerns that may impact on their ability to achieve their apprenticeship. This includes (all of the above) and providing helpful strategies to in the workplace use for those who may experience anxiety.”

EXTRACT FROM OFSTED REPORT PUBLISHED MAY 2024

OUR PURPOSE

Our **Purpose** is to empower the individuals, employers and communities we work with every day, to learn, achieve and excel.

OUR VALUES

In tandem with the **Values** upheld by the Angus Knight Group, our Values are a set of principles that reinforce our commitment to excellence, integrity and inclusivity. Our Values are a compass that guides us in our daily interactions and decision making processes.



WE ARE
PRINCIPLED



WE KEEP OUR
PROMISES



WE ACHIEVE
TOGETHER



WE RESPECT AND
VALUE ALL PEOPLE

OUR CIH QUALIFICATIONS

Our Chartered Institute of Housing (CIH) qualifications are designed to help your team members grow professionally, equipping them with the knowledge and skills they need to excel in their roles. These courses ensure your employees are prepared to contribute effectively to the housing sector.

Testimonial - Mark O

“Learn Plus Us have been excellent from the start of my qualification all the way to its completion. This course has furthered my knowledge of property management, especially around legislation. The course has taught me to be organised in my work and make it look professional. This will help me in the real world as this is what employers will be looking for.”

The skills I've gained and qualification I've achieved will help me to explore the opportunity of becoming a property manager with my current employer.”



ENROLMENT

Learn Plus Us believe in “right learner, right course”. By that we mean it is crucial that all learners are accurately matched to a professional qualification that suits their job role. To achieve this, anyone wishing to enrol on one of our professional qualifications will be required to complete the following process:

INITIAL CONSULTATION

We discuss your organisation’s needs and identify suitable qualifications for your team members.

EMPLOYER REFERRALS

Learn Plus Us is provided with a list of learners and their contact details.

ENROLMENT FORM AND I.D. CHECK

Learners will receive their enrolment form. This must be returned to Learn Plus Us alongside a copy of their photo identification.

FIRST LEARNING SESSION

Learners join their first tutor-led session and begin working towards the completion of their qualification.

DELIVERY

Our flexible learning model minimises disruption to your business while maximising outcomes for your team:



WEBINARS

Delivered via Microsoft Teams, covering key topics in two-three hour interactive sessions



1:1 SESSIONS

Individualised sessions to review progress, receive feedback, and address challenges.



PROGRESS REVIEWS

Regular check-ins with learners and managers to ensure alignment with organisational goals.



FACE-TO-FACE DELIVERY

Available for higher-level qualifications*, encouraging deeper engagement and networking.



ONLINE LEARNING

Access additional resources and courses through our Laser Learning platform.

ASSESSMENT METHODS

- Written assignments
- Workplace evaluations
- Case studies
- Practical projects
- Presentations
- Professional Discussions
- Verbal essays

**Provided on a case-by-case basis.*

WRAPAROUND SUPPORT SERVICE

We're committed to ensuring all learners succeed. Our additional support services include:

ESOL (English for Speakers of Other Languages)

Tailored resources for employees whose first language is not English.

Employer Benefit: Enhances communication and reduces misunderstandings, leading to a more cohesive and productive workforce.

Mental Health & Wellbeing resources

Tools and initiatives that promote resilience and a healthy work-life balance.

Employer Benefit: Boosts employee productivity and minimises time off by supporting mental health and promoting work-life balance.

Additional Learning Support

Tailored support for learners with specific needs or disabilities.

Employer Benefit: Encourages an inclusive work environment and enhances job performance for employees with specific needs or disabilities.

English & Maths Development

Focused support to improve core skills, benefiting both learners and workplace performance.

Employer Benefit: Improves core skills, increasing employee productivity, reducing errors, and enabling them to take on more complex tasks.

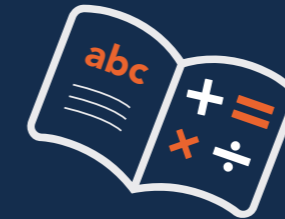
Enriched & Extended Curriculum

We elevate the learning experience by integrating supplementary activities and training beyond the standard curriculum. These include sector-specific workshops, professional networking events, and targeted skill-building sessions. This approach equips learners with a diverse and comprehensive skill set, enabling them to adapt to and excel in the dynamic demands of your sector.

Employer Benefit: Equips employees with a broader skill set, increases engagement, and helps them adapt to industry changes and challenges.



**ESOL**
for work and for life



TESTIMONIALS

"I was diagnosed with dyscalculia and really struggled to understand how to work out math problems and fractions. However with numerous sessions by various Tutors, who patiently guided me and supported me. I was able to slowly progress to the point where I have been able to pass my math exams."

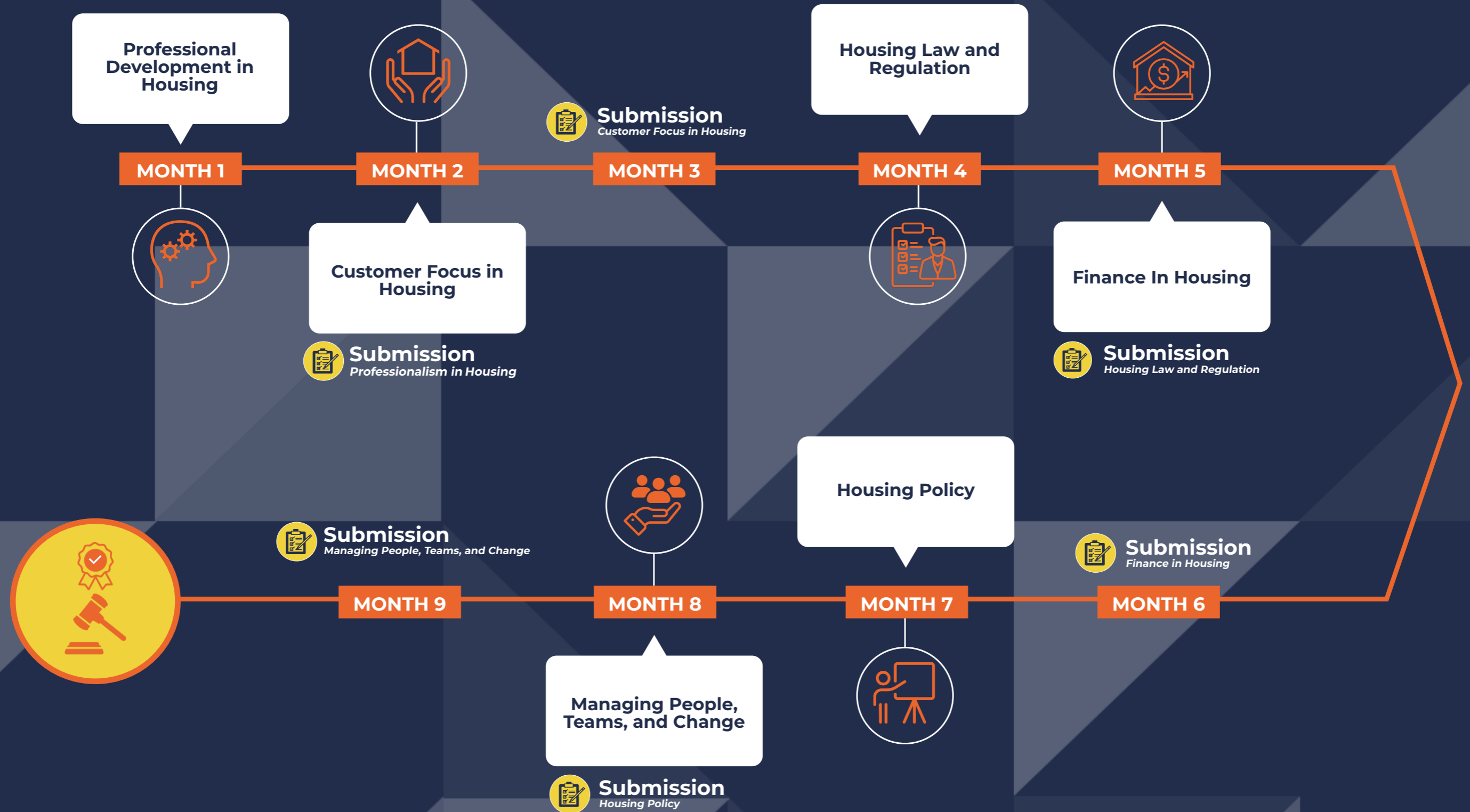
"It is a totally judgement free environment, and I actually look forward to attending sessions because the conversations are always positive and beneficial to me."

"The lessons were engaging, well-structured, and tailored to my needs."

Learner Journey (example)

LEVEL 4 CERTIFICATE IN HOUSING

These learning topics will be delivered via webinar sessions with your tutor. They will be via the Microsoft Teams platform and will be a maximum of three hours. This qualification supports compliance with The Social Housing Regulation Act (2023)



INTERESTED?

If you are interested in starting your Professional Qualification journey, please contact us at sales@learnplusus.co.uk.

Learn Plus Us

Head Office

North London Business Park
Oakleigh Road South, New Southgate
London, N11 1GN

Tel: 020 8444 4304
learnplusus.co.uk

Find @learnplusus on LinkedIn, Twitter,
Instagram, and Facebook



Education & Skills
Funding Agency



Apprenticeships



Department
for Education

